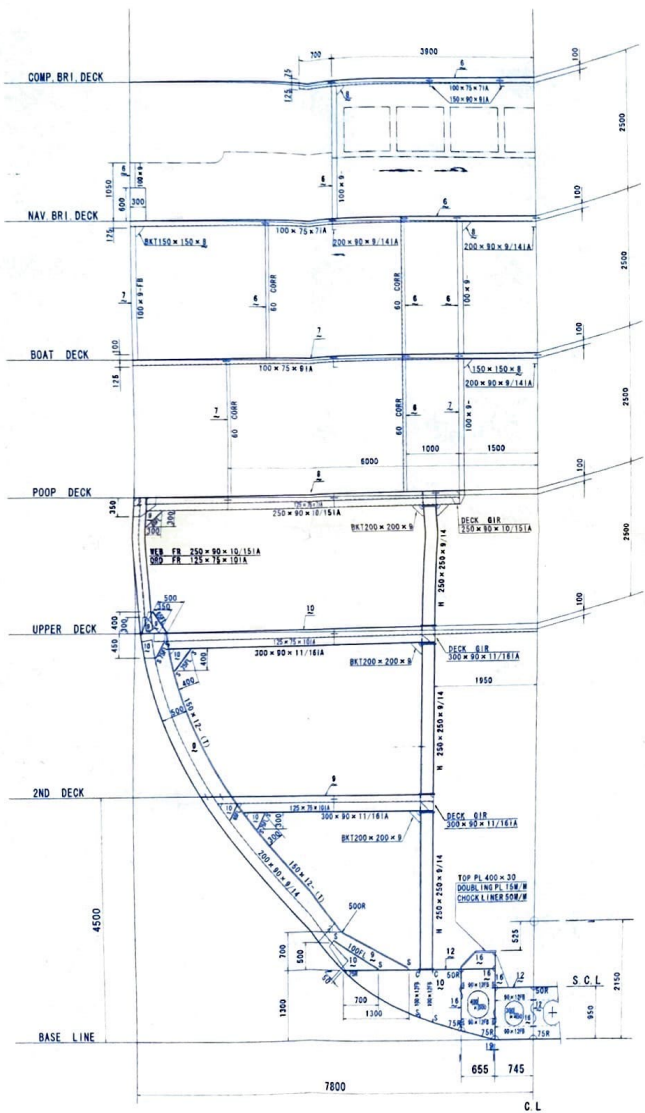


NOTE

13 May, 2002, 打合せ用として作成する
19 Mar, 2003, ADJUSTED FOR FINISHED PLAN



EQUIPMENT NUMBER

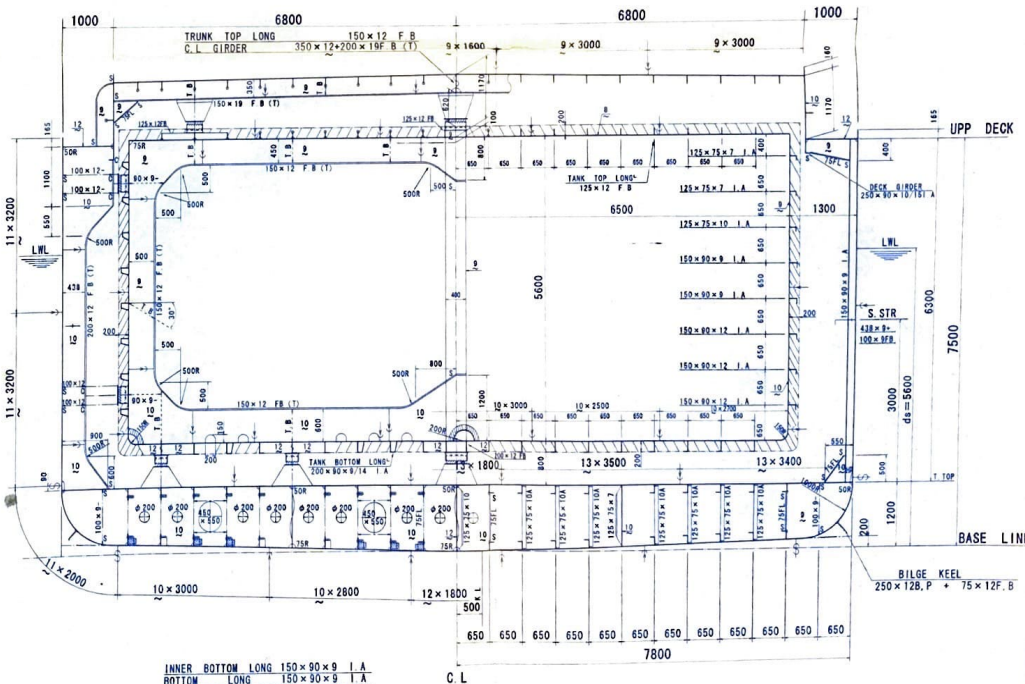
$W = 6250 \text{ T (SCANTLING)}$
 $f = D - ds = 7.5 - 5.6 = 1.9$
 $h' = 2.50 + 2.50 + 2.80 + 2.50 = 10.0$
 $h = f + h' = 1.9 + 10.0 = 11.9$
 $f \times L = 1.9 \times 93.5 = 177.7$
 $(h' \times l) \text{ F'CLE DECK} = 2.30 \times 9.40 = 21.6$
 POOP DECK = $2.5 \times 26.90 = 67.3$
 BOAT DECK = $2.5 \times 16.90 = 42.3$
 NAV. BRI. DECK = $2.5 \times 14.95 = 37.4$
 COMP. DECK = $2.5 \times 4.55 = 11.4$
 $\Sigma (h' \times l) = 180.0$
 $A = f \times L + \Sigma (h' \times l) = 177.7 + 180.0 = 358$
 $M^{2/3} = 2.0 \text{ HB} + 0.1A$
 $M^{2/3} = 6250^{2/3} = 339$
 $2 \text{ OHB} = 2.0 \times 11.9 \times 15.6 = 371$
 $0.1A = 0.1 \times 358 = 36$
 EQUIPMENT = $339 + 371 + 36 = 746$
 $D4 (720 \sim 780)$

PRINCIPAL PARTICULARS

LENGTH (P.P)	93M.50
BREADTH (MLD.)	15M.60
DEPTH (MLD.)	7M.50
DRAFT (DESIGNED)	5M.50
DRAFT (SCANTLING)	5M.60
MAIN ENGINE (DIRSEL)	2427 KW
SPEED (SCANTLING)	13.5 Knot
GOING AREA	OCEAN GOING
CLASS NK NS*(Asphalt Tanker)MNS*	

EQUIPMENT (D4)

	RULE	SHIP
BOWER ANCHOR	2 x 2280kg	1 x 2350kg + 1 x 2340kg
BOWER ANCHOR CABLE (ENG. II)	42 φ x 467.5 ^m	42 φ x 467.5 ^m
TOW LINE (S.W.R 6×24)	44TKMx 190.0 ^m	32 φ x 190.0 ^m
HOWSER LINE (CE. Compound)	4 x 172KNx 170.0 ^m	4 x 45 φ x 200.0 ^m



INNER BOTTOM LONG 150×90×9 I.A
 BOTTOM LONG 150×90×9 I.A
 STRUT 125×75×10A
 FLOOR STIFF 100×9F.B (C-C)

FINAL PLAN

SHIP NO	SNo 375
NAME OF OWNER	MAYHILL HOLDINGS INC
NAME OF SHIP	JANESIA ASPHALT III

3600m³型 ASPHALT
MIDSHIP SECTION
(中央横断面図)

SCALE 1/50

(株) 栗之浦ドック
 KURINOURA DOCKYARD CO. LTD
 YAWATAHAMA JAPAN

DRAWN BY	T.M
CHECKED BY	
CHEIF OF PART	
CHEIF OF SECT	
DATE	13. May, 2002
DRWG. NO.	H-3